



Wide range of industrial Bearings with unlimited possibilities.

NKE develops and manufactures **premium quality** bearings for a wide spectrum of **industrial applications**.



Cylindrical roller bearings / Ball bearings  
Tapered roller bearings / Spherical roller bearings  
Agri-Units / Bearing units / Electrically insulated bearings

INDUSTRIAL APPLICATIONS

**Mechanical Drives:**

- NKE bearings cover 10kW to 3MW applications.

**Electrical Drives:**

- NKE develops bearings for all kinds of electrical machinery, such as electric motors, traction motors for rail vehicles or wind turbines, among others.

**Fluid Technology:**

- We offer a full range of standard and special bearings for high-performance pumps intended for various industries (petrochemical, food, etc.).

**Agri-Industry:**

- We are official suppliers for leading brands of agricultural equipment such as Lemken, John Deere, NAF and Valtra.

MORE THAN 20 YEARS  
OF EXPERIENCE  
SUPPORT YOU



# YOUR PARTNER FOR SUCCESS

**EUROPE**  
Austria | Steyr

NKE Bearings headquarters  
Tel.: +43 7252 86667  
office@nke.at

Spain | Zaragoza

Fersa Bearings headquarters  
Tel.: +34 976 333 850  
fersa@fersa.com

Fersa Iberia  
Tel.: +34 876 269 571  
fersaiberia@fersa.com

**NORTH AMERICA**  
USA | Toledo - OH

Tel.: +1 (567) 277 7800  
fersa.usa@fersa.com

**SOUTH AMERICA**  
Brazil

Pinhais  
Tel.: +55 41 3132 5100  
São Paulo  
Tel.: +55 11 2325 3938  
fersa.brasil@fersa.com

**ASIA**  
China | Jiaxing

Tel.: +86 (0) 573 8271 6635  
fersa.cn@fersa.com

www.nke.at



FERSAGROUP



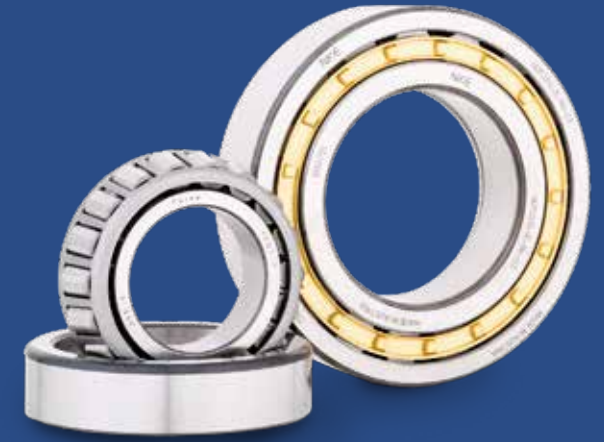
LARGE  
SIZE  
BEARINGS

Experts in Bearing Solutions



## FERSAGROUP

Fersa Group was created through the merger of two European bearing manufacturers: Fersa Bearings in Spain and NKE in Austria. Both are globally active in the design, production and distribution of high quality bearings for the global automotive and industrial markets.



### ▪ Best in class manufacturing centers

The group is present on all five continents, with three state of the art factories, five distribution centers as well as three R&D centers, two in Europe and one in Asia all of them supporting our growing presence in more than 85 countries.



ENG.



## ■ Wind turbines

Austrian bearing specialist **NKE** produces **modular bearing systems** for planetary gears in **wind turbine gearboxes**.

The new bearing assemblies offer the advantages of a standardization of the bearings used in this application, a reduced diversity of parts and simplified logistics. The bearing systems are developed according to customer specifications and of many well-known gearbox manufacturer.

The cylindrical roller bearing rows 3, 22 and 23 form the basis as a function of the available space available and the customer requirements, especially when replacing previously used bearing solutions.

Beside modular planetary gear bearings, NKE also supplies all other bearings for use in wind turbine gearboxes, main shafts and generators. These include full complement cylindrical roller bearings as well as cylindrical roller bearings with cage, tapered roller bearings, spherical roller bearings and, four-point contact and deep groove ball bearings.



OUR PRODUCTS AS  
DIVERSE AS  
YOUR APPLICATIONS



## ■ Electrically insulated rolling bearings

Providing reliable protection against current passage and electrical corrosion. Typical applications are **electric motors, generators** and other **electrical machines**.

Electrically insulated bearings from NKE are provided with an oxide ceramic insulation layer.

The most important advantages of these bearings are higher operating reliability, which is assured by optimal protection against electrical corrosion. Electrically insulated bearings are less expensive than applying insulation to housings or shafts. They also offer a reduced risk of damage and thus also longer operating life than conventional bearings when used in electrical machines. When electrically insulated bearings are handled properly, there is no risk of damage to the coating.

The main range of electrically insulated bearings consists of cylindrical roller bearings and deep groove ball bearings. Application areas include traction motors of railway vehicles, electric motors and generators, particularly in conjunction with fast-switching frequency converters.



DIFFERENT DEMANDS  
SAME COMMITMENT



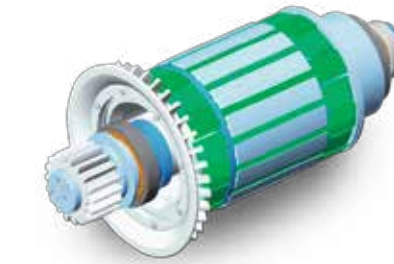
## ■ Railway

The available products and services include roller bearings for **traction motors** and **gearboxes** as well as extended technical services for the **railway industry**.

Longer service life is the key criterion for roller bearings used in traction motors. The most commonly used bearing types for this application are cylindrical roller bearings, deep groove ball bearings and electrically insulated roller bearings, which are available as hybrid bearings or with a coated outer or inner ring.

Gearbox bearings run at high speeds and are exposed to significant loads. In addition they must endure shocks, vibrations and extreme temperatures. The bearing types used most commonly here are cylindrical roller bearings, tapered roller bearings, angular contact ball bearings, four-point contact ball bearings and deep groove ball bearings.

**NKE bearings for gearboxes and traction motors are usually produced with special specifications.**



YOUR ANSWER  
FOR HIGH  
REQUIREMENTS



## ■ Our special products



### Cylindrical roller bearings

- Suitable for high radial loads
- Multi-row and full complement versions available for even higher radial loads.
- Special specifications (optimised geometry) and customized designs available.
- Modular system allows for standardization of planet wheel bearings.

### Tapered roller bearings

- Suitable for high radial loads and thrust loads.
- Able to take up tilting moments.
- When paired, can take up thrust loads in both directions.
- Usually used on customized designs for gearboxes.

### Spherical roller bearings

- Suitable for large radial loads and low to medium speeds.
- Allows compensation for misalignment.
- Usually for main shafts and gearboxes.

### Deep groove ball bearings

- Suitable for high speeds, moderate radial and axial loads.
- Quiet and economical running.
- Open or ready for use – pre-lubricated with shields/seals.

## ■ Quality in everything we do

The strategic set-up of the manufacturing facilities in Steyr, Austria is based around **flexibility** and **speed**. State-of-the-art technologies enable the highest operating **efficiency** and **precision**.

### 100% quality guarantee

All NKE bearings undergo stringent and documented quality inspection. By using advanced test and measuring equipment as well as a rigorous quality policy, we can guarantee that every single batch of bearings delivered to you is of the highest quality standards.

### Advanced Engineering

Combines application-oriented practical experience with findings from research and development and develops future-oriented new products and solutions for you.



BEYOND  
HARD WORK